



# Certificate of Analysis

QA SAMPLE - INFORMATIONAL ONLY

1 of 4

ICAL ID: 20220406-004  
Sample: CA220406-002-004  
CBD Balm Full Spectrum 2,000mg/1oz  
4,000mg/2oz  
Strain: CBD Balm Full Spectrum 2,000mg/1oz  
4,000mg/2oz  
Category: Topical

Batch#: DK20-9464/DK20-4004  
Batch Size Collected:  
Total Batch Size:  
Collected: 04/11/2022; Received: 04/11/2022  
Completed: 04/11/2022

Moisture	Δ9-THC	CBD	Total Cannabinoids	Total Terpenes
NT	<b>65.71 mg/unit</b>	<b>2,043.76 mg/unit</b>	<b>2,249.33 mg/unit</b>	NT
Water Activity				
NT	<b>65.71 mg/serving</b>	<b>2043.76 mg/serving</b>	<b>2249.33 mg/serving</b>	

Summary	SOP Used	Date Tested	
Batch			Pass
Cannabinoids	POT-PREP-005	04/07/2022	Complete
Residual Solvents	RS-PREP-001	04/06/2022	Pass
Microbials	MICRO-PREP-001	04/08/2022	Pass
Mycotoxins	PESTMICO-LC-PREP-001	04/07/2022	Pass
Heavy Metals	HM-PREP-001	04/07/2022	Pass
Foreign Matter	FM-PREP-001	04/06/2022	Pass
Pesticides	PESTMICO-LC-PREP-001 / PEST-GC-PREP-001	04/07/2022	Complete



## Cannabinoid Profile

1 Unit = container, 29.3 g. 1 serving(s) per container.

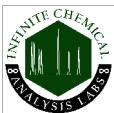
Analyte	LOQ (mg/g)	LOD (mg/g)	%	mg/g	mg/unit	Analyte	LOQ (mg/g)	LOD (mg/g)	%	mg/g	mg/unit
THCa	0.0481	0.0160	ND	ND	ND	CBDV	0.0414	0.0062	0.066	0.66	19.31
Δ9-THC	0.0414	0.0122	0.224	2.24	65.71	CBN	0.0414	0.0089	0.024	0.24	6.97
Δ8-THC	0.0414	0.0066	ND	ND	ND	CBGa	0.0414	0.0100	ND	ND	ND
THCV	0.0414	0.0053	ND	ND	ND	CBG	0.0414	0.0056	0.083	0.83	24.41
CBDa	0.0532	0.0177	0.292	2.92	85.41	CBC	0.0425	0.0142	0.049	0.49	14.27
CBD	0.0414	0.0055	6.975	69.75	2043.76	<b>Total THC</b>			<b>0.22</b>	<b>2.24</b>	<b>65.71</b>
						<b>Total CBD</b>			<b>7.23</b>	<b>72.31</b>	<b>2118.66</b>
						<b>Total</b>			<b>7.68</b>	<b>76.77</b>	<b>2249.33</b>

Total THC=THCa \* 0.877 + d9-THC; Total CBD = CBDa \* 0.877 + CBD. LOD= Limit of Detection, LOQ= Limit of Quantitation, ND= Not Detected, NR= Not Reported. Potency is reported on a dry weight basis. Instrumentation and analysis SOPs used: Cannabinoids:UHPLC-DAD(POT-INST-005),Moisture:Moisture Analyzer(MOISTURE-001),Water Activity:Water Activity Meter(WA-INST-002), Foreign Material:Microscope(FOREIGN-001). Density measured at 19-24 °C, Water Activity measured at 0-90% RH. All QA submitted by the client, All CA State Compliance sampled using SAMPL-SOP-001.

## Terpene Profile

Analyte	LOQ (mg/g)	LOD (mg/g)	%	mg/g	Analyte	LOQ (mg/g)	LOD (mg/g)	%	mg/g
---------	------------	------------	---	------	---------	------------	------------	---	------

NR= Not Reported (no analysis was performed), ND= Not Detected (the concentration is less than the Limit of Detection (LOD)). Analytical instrumentation used: HS-GC-MS; samples analyzed according to SOP TERP-INST-003.



Infinite Chemical Analysis Labs  
8312 Miramar Mall  
San Diego, CA  
(858) 623-2740  
www.infiniteCAL.com  
Lic# C8-0000047-LIC

*Josh M Swider*

Josh Swider  
Lab Director, Managing Partner  
04/11/2022

Confident Cannabis  
All Rights Reserved  
support@confidentcannabis.com  
(866) 506-5866  
www.confidentcannabis.com



This product has been tested by Infinite Chemical Analysis, LLC using valid testing methodologies and a quality system as required by state law. All LQC samples were performed and met the prescribed acceptance criteria in 16 CCR section 15730, pursuant to 16 CCR section 15726(e)(13). Values reported relate only to the product tested. Infinite Chemical Analysis, LLC makes no claims as to the efficacy, safety or other risks associated with any detected or non-detected levels of any compounds reported herein. This Certificate shall not be reproduced except in full, without the written approval of Infinite Chemical Analysis, LLC.



# Certificate of Analysis

QA SAMPLE - INFORMATIONAL ONLY

2 of 4

ICAL ID: 20220406-004  
 Sample: CA220406-002-004  
 CBD Balm Full Spectrum 2,000mg/1oz  
 4,000mg/2oz  
 Strain: CBD Balm Full Spectrum 2,000mg/1oz  
 4,000mg/2oz  
 Category: Topical

Batch#: DK20-9464/DK20-4004  
 Batch Size Collected:  
 Total Batch Size:  
 Collected: 04/11/2022; Received: 04/11/2022  
 Completed: 04/11/2022

## Residual Solvent Analysis

Category 1	LOQ	LOD	Limit	Status	Category 2	LOQ	LOD	Limit	Status	Category 2	LOQ	LOD	Limit	Status			
	µg/g	µg/g	µg/g	µg/g		µg/g	µg/g	µg/g	µg/g		µg/g	µg/g	µg/g	µg/g			
1,2-Dichloro-Ethane	ND	0.2995	0.0998	1	Pass	Acetone	ND	51.246	3.1441	5000	Pass	n-Hexane	ND	0.7288	0.1785	290	Pass
Benzene	ND	0.0999	0.0333	1	Pass	Acetonitrile	ND	1.7231	0.5744	410	Pass	Isopropanol	ND	0.3353	0.1118	5000	Pass
Chloroform	ND	0.1543	0.0514	1	Pass	Butane	ND	8.3604	2.7868	5000	Pass	Methanol	ND	7.7392	2.5797	3000	Pass
Ethylene Oxide	ND	0.971	0.3237	1	Pass	Ethanol	ND	5.8136	1.9379	5000	Pass	Pentane	ND	5.2119	1.7373	5000	Pass
Methylene-Chloride	ND	2.6015	0.8672	1	Pass	Ethyl-Acetate	ND	2.2878	0.329	5000	Pass	Propane	ND	31.9524	10.6508	5000	Pass
Trichloroethene	ND	0.1996	0.0665	1	Pass	Ethyl-Ether	ND	2.8693	0.9011	5000	Pass	Toluene	ND	0.8637	0.0685	890	Pass
						Heptane	ND	2.8588	0.7475	5000	Pass	Xylenes	ND	2.5719	0.4441	2170	Pass

NR= Not Reported (no analysis was performed), ND= Not Detected (the concentration is less than the Limit of Detection (LOD)). Analytical instrumentation used: HS-GC-MS; samples analyzed according to SOP RS-INST-003.

## Heavy Metal Screening

	LOQ	LOD	Limit	Status	
	µg/g	µg/g	µg/g	µg/g	
Arsenic	ND	0.009	0.003	1.5	Pass
Cadmium	ND	0.002	0.001	0.5	Pass
Lead	<LOQ	0.004	0.001	0.5	Pass
Mercury	ND	0.014	0.005	3	Pass

NR= Not Reported (no analysis was performed), ND= Not Detected (the concentration is less than the Limit of Detection (LOD)). Analytical instrumentation used: ICP-MS; samples analyzed according to SOP HM-INST-003.

## Microbiological Screening

	Limit	Result	Status
	CFU/g	CFU/g	
Aspergillus flavus		NR	NT
Aspergillus fumigatus		NR	NT
Aspergillus niger		NR	NT
Aspergillus terreus		NR	NT
STEC		Not Detected	Pass
Salmonella SPP		Not Detected	Pass

ND=Not Detected. Analytical instrumentation used:qPCR; samples analyzed according to SOP MICRO-INST-001.



Infinite Chemical Analysis Labs  
 8312 Miramar Mall  
 San Diego, CA  
 (858) 623-2740  
 www.infiniteCAL.com  
 Lic# C8-0000047-LIC

*Josh M Swider*

Josh Swider  
 Lab Director, Managing Partner  
 04/11/2022

Confident Cannabis  
 All Rights Reserved  
 support@confidentcannabis.com  
 (866) 506-5866  
 www.confidentcannabis.com



This product has been tested by Infinite Chemical Analysis, LLC using valid testing methodologies and a quality system as required by state law. All LQC samples were performed and met the prescribed acceptance criteria in 16 CCR section 15730, pursuant to 16 CCR section 15726(e)(13). Values reported relate only to the product tested. Infinite Chemical Analysis, LLC makes no claims as to the efficacy, safety or other risks associated with any detected or non-detected levels of any compounds reported herein. This Certificate shall not be reproduced except in full, without the written approval of Infinite Chemical Analysis, LLC.



# Certificate of Analysis

QA SAMPLE - INFORMATIONAL ONLY

3 of 4

ICAL ID: 20220406-004  
 Sample: CA220406-002-004  
 CBD Balm Full Spectrum 2,000mg/1oz  
 4,000mg/2oz  
 Strain: CBD Balm Full Spectrum 2,000mg/1oz  
 4,000mg/2oz  
 Category: Topical

Batch#: DK20-9464/DK20-4004  
 Batch Size Collected:  
 Total Batch Size:  
 Collected: 04/11/2022; Received: 04/11/2022  
 Completed: 04/11/2022

## Chemical Residue Screening

Category 1	LOQ	LOD	Status	
	µg/g	µg/g	µg/g	
Aldicarb	ND	0.030	0.010	Tested
Carbofuran	ND	0.030	0.004	Tested
Chlordane	ND	0.075	0.025	Tested
Chlorfenapyr	ND	0.075	0.025	Tested
Chlorpyrifos	ND	0.033	0.011	Tested
Coumaphos	<LOQ	0.030	0.007	Tested
Daminozide	ND	0.058	0.019	Tested
Dichlorvos	ND	0.051	0.017	Tested
Dimethoate	ND	0.030	0.009	Tested
Ethoprophos	ND	0.030	0.006	Tested
Etofenprox	ND	0.030	0.006	Tested
Fenoxycarb	ND	0.034	0.011	Tested
Fipronil	ND	0.030	0.006	Tested
Imazalil	ND	0.030	0.009	Tested
Methiocarb	ND	0.030	0.010	Tested
Mevinphos	ND	0.040	0.013	Tested
Paclbutrazol	ND	0.034	0.011	Tested
Parathion Methyl	ND	0.024	0.008	Tested
Propoxur	ND	0.030	0.007	Tested
Spiroxamine	ND	0.030	0.004	Tested
Thiacloprid	ND	0.030	0.003	Tested

Mycotoxins	LOQ	LOD	Limit	Status	
	µg/kg	µg/kg	µg/kg	µg/kg	
B1	ND	5.88	1.94	Tested	
B2	ND	8.04	2.65	Tested	
G1	ND	11.85	3.91	Tested	
G2	ND	5	1.54	Tested	
Ochratoxin A	ND	14.49	4.78	20	Pass
Total Aflatoxins	ND			20	Pass

Category 2	LOQ	LOD	Limit	Status
	µg/g	µg/g	µg/g	µg/g
Abamectin	ND	0.044	0.014	Tested
Acephate	ND	0.030	0.006	Tested
Acequinocyl	ND	0.085	0.028	Tested
Acetamiprid	ND	0.030	0.007	Tested
Azoxystrobin	ND	0.030	0.004	Tested
Bifenazate	ND	0.030	0.008	Tested
Bifenthrin	ND	0.049	0.016	Tested
Boscalid	ND	0.032	0.011	Tested
Captan	ND	0.358	0.120	Tested
Carbaryl	ND	0.030	0.006	Tested
Chlorantraniliprole	ND	0.030	0.007	Tested
Clofentezine	ND	0.030	0.006	Tested
Cyfluthrin	ND	0.056	0.019	Tested
Cypermethrin	ND	0.044	0.015	Tested
Diazinon	ND	0.082	0.027	Tested
Dimethomorph	ND	0.031	0.010	Tested
Etoxazole	ND	0.030	0.005	Tested
Fenhexamid	ND	0.044	0.015	Tested
Fenpyroximate	ND	0.030	0.010	Tested
Flonicamid	ND	0.055	0.018	Tested
Fludioxonil	ND	0.058	0.019	Tested
Hexythiazox	ND	0.066	0.022	Tested
Imidacloprid	ND	0.070	0.023	Tested

Category 2	LOQ	LOD	Limit	Status
	µg/g	µg/g	µg/g	µg/g
Kresoxim Methyl	ND	0.030	0.010	Tested
Malathion	ND	0.030	0.007	Tested
Metalaxyl	ND	0.030	0.005	Tested
Methomyl	ND	0.032	0.010	Tested
Myclobutanil	ND	0.030	0.010	Tested
Naled	ND	0.035	0.012	Tested
Oxamyl	ND	0.031	0.010	Tested
Pentachloronitrobenzene	ND	0.054	0.018	Tested
Permethrin	ND	0.030	0.004	Tested
Phosmet	ND	0.030	0.008	Tested
Piperonyl Butoxide	ND	0.030	0.009	Tested
Prallethrin	ND	0.062	0.020	Tested
Propiconazole	ND	0.064	0.021	Tested
Pyrethrins	ND	0.030	0.004	Tested
Pyridaben	ND	0.030	0.008	Tested
Spinetoram	ND	0.030	0.003	Tested
Spinosad	ND	0.030	0.003	Tested
Spiromesifen	ND	0.031	0.010	Tested
Spirotetramat	ND	0.030	0.010	Tested
Tebuconazole	ND	0.065	0.021	Tested
Thiamethoxam	ND	0.030	0.009	Tested
Trifloxystrobin	ND	0.030	0.004	Tested

### Other Analyte(s):

NR= Not Reported (no analysis was performed), ND= Not Detected (the concentration is less than the Limit of Detection (LOD)). Analytical instrumentation used: LC-MS-MS & GC-MS-MS; samples analyzed according to SOPs PESTMYCO-LC-INST-004 and PEST-GC-INST-003.



Infinite Chemical Analysis Labs  
 8312 Miramar Mall  
 San Diego, CA  
 (858) 623-2740  
 www.infiniteCAL.com  
 Lic# C8-000047-LIC

*Josh M Swider*

Josh Swider  
 Lab Director, Managing Partner  
 04/11/2022

Confident Cannabis  
 All Rights Reserved  
 support@confidentcannabis.com  
 (866) 506-5866  
 www.confidentcannabis.com



This product has been tested by Infinite Chemical Analysis, LLC using valid testing methodologies and a quality system as required by state law. All LQC samples were performed and met the prescribed acceptance criteria in 16 CCR section 15730, pursuant to 16 CCR section 15726(e)(13). Values reported relate only to the product tested. Infinite Chemical Analysis, LLC makes no claims as to the efficacy, safety or other risks associated with any detected or non-detected levels of any compounds reported herein. This Certificate shall not be reproduced except in full, without the written approval of Infinite Chemical Analysis, LLC.



# Certificate of Analysis

QA SAMPLE - INFORMATIONAL ONLY

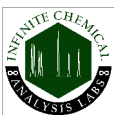
4 of 4

ICAL ID: 20220406-004  
Sample: CA220406-002-004  
CBD Balm Full Spectrum 2,000mg/1oz  
4,000mg/2oz  
Strain: CBD Balm Full Spectrum 2,000mg/1oz  
4,000mg/2oz  
Category: Topical

Batch#: DK20-9464/DK20-4004  
Batch Size Collected:  
Total Batch Size:  
Collected: 04/11/2022; Received: 04/11/2022  
Completed: 04/11/2022

## Additional Package Sizes

Cannabinoids Unit 1	$\Delta^9$ -THC	CBD	Total Cannabinoids	
unit = 29.30 g container	65.71 mg/unit	2,043.76 mg/unit	2,249.33 mg/unit	Pass
1 serving(s) per container	65.71 mg/serving	2,043.76 mg/serving	2,249.33 mg/serving	
Cannabinoids Unit 2	$\Delta^9$ -THC	CBD	Total Cannabinoids	
unit = 57.83 g container	129.68 mg/unit	4,033.81 mg/unit	4,439.55 mg/unit	Pass
1 serving(s) per container	129.68 mg/serving	4,033.81 mg/serving	4,439.55 mg/serving	



Infinite Chemical Analysis Labs  
8312 Miramar Mall  
San Diego, CA  
(858) 623-2740  
www.infiniteCAL.com  
Lic# C8-000047-LIC

*Josh M Swider*

Josh Swider  
Lab Director, Managing Partner  
04/11/2022

Confident Cannabis  
All Rights Reserved  
support@confidentcannabis.com  
(866) 506-5866  
www.confidentcannabis.com



This product has been tested by Infinite Chemical Analysis, LLC using valid testing methodologies and a quality system as required by state law. All LQC samples were performed and met the prescribed acceptance criteria in 16 CCR section 15730, pursuant to 16 CCR section 15726(e)(13). Values reported relate only to the product tested. Infinite Chemical Analysis, LLC makes no claims as to the efficacy, safety or other risks associated with any detected or non-detected levels of any compounds reported herein. This Certificate shall not be reproduced except in full, without the written approval of Infinite Chemical Analysis, LLC.